



LIVING/STUDY Storage is tucked into every available space, including either side of the original marble fireplace. Bestlite BL3 floor lamp, Cult. Artworks by unknown artist (far left) and Maryanne Mungatopi.

Smart buy: Cleo three-seater sofa, upholstered in Altamira Surtsey linen in Cafe Noir, from \$4630, Jordan.

HALL The front door opens to a generous hallway that flows uninterrupted to the rear of the house, giving visitors tantalising glimpses of the garden and pool. Caravaggio P3 pendant lights, Cult. Smoked engineered-timber flooring, Royal Oak Floors. For Where to Buy, see page 236.

This is the life

When a home becomes too squeezey, moving on can seem like the easier option. For these owners, staying put and renovating proved the right choice. "The heritage features that first attracted us to the home have been lovingly restored and the whole house has been updated with a clean, modern feel. There's plenty of room for everyone now and it flows so well."

HERE TO STAY

With their much-loved period terrace feeling the squeeze, this Melbourne family embraced the opportunity to grow with the flow.

STORY JUDY OSTERGAARD ♦ STYLING EMMA BARNETT ♦ PHOTOGRAPHY NIK EPIFANIDIS



The house, a Victorian-era double-fronted terrace, was charming, and the location – inner Melbourne – ideal. But with a family of five to accommodate, the treasured home was practically bursting at the seams and in danger of being loved to pieces. It was crunch time. “We needed to renovate or move,” says one of the owners. So in 2010, renovate they did, with the help of interior designer, Chelsea Hing.

By this time, the owners, a professional couple with three children, had been living in the single-storey terrace for 15 years, so their list of needs and wants was well refined.

The structure was largely original, though a 1980s renovation had seen an extension to the kitchen/living area at the rear. The addition was poorly resolved, however, leaving no room for a dining table. Design quirks resulting from ad-hoc conversions – doors connecting one bedroom to the living room, a spiral staircase leading to the attic in another – needing addressing too. “Our brief was to completely renovate and furnish the ground floor, plus add a second storey,” says Chelsea. “We brought in building designers, Karl Degering & Associates to design the first-floor extension, which needed to comply with heritage requirements.”

Tweaking the floor plan was the first order of business. In the main bedroom, the ensuite and walk-in wardrobe were reconfigured within the same footprint. The doors between the living room/study and second bedroom (now a guestroom) were sealed, and the bedroom with the spiral stairs converted into a more spacious family bathroom and walk-in linen cupboard. >

FAMILY The Heat Seeker Enviro gas fireplace from Real Flame almost blends into the joinery. Mantel made from Pietra Grigio natural stone, Classic Ceramics. Coffee table, Pierre and Charlotte.

KITCHEN The revamped kitchen is one of the owner’s favourite features. “It’s ideal for entertaining and a breeze to keep clean,” she says. Benchtops made from Caesarstone Osprey (island) and stainless steel. Splashback tiles, Artedomus. Appliances, all Miele. Smoked engineered-timber flooring, Royal Oak Floors.

DINING The 10-seater dining table from Pierre and Charlotte handles everyday meals and impromptu dinner parties with aplomb. Designer buy: Rombus dining chairs in Dulux Icelandic, \$360/each, Thonet. For Where to Buy, see page 236.



Taubmans Sienna Frost, half strength (interior walls, throughout)

Resene Pravda, half strength (kitchen joinery)

Resene Dune, triple strength (family room joinery)

ADD A DASH OF
Bristol Toffee Apple

Deep red adds warmth and is in keeping with the earthy palette.



'HAVING CHELSEA SELECT THE FURNITURE MEANT THAT EVERYTHING FITTED PERFECTLY AND WAS IN COMPLETE HARMONY WITH THE DESIGN.' HOMEOWNER

FAMILY Well-chosen furniture makes the room feel cosy without being cramped. Lucky modular leather sofa and Kano armchairs, all Jordan. MissoniHome Montgomery throw, Safari Living. Artwork by Jan Senbergs.

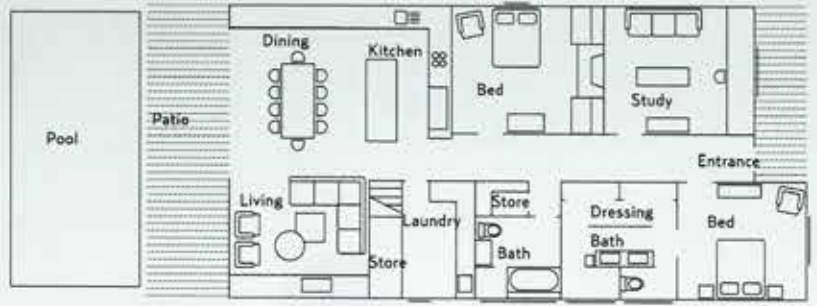
LIVING/STUDY A study area in the front living room affords the owners a quiet place to make a phone call or catch up on household admin. Joinery designed by Chelsea Hing. Catifa 46 office chair, Stylecraft. Vintage prints. MissoniHome Lisbona throw, Safari Living.

MAIN BEDROOM The earthy neutral palette is soothing and works well with both the period and modern features. Coverlet, Altamira. Artwork by Jan Senbergs. Escape Velour wool carpet in Blast, SuperTuft. >

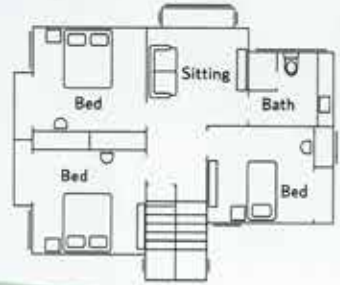
Smart buy: Raw chest of six drawers, \$4620, Zuster. For Where to Buy, see page 236.



GROUND FLOOR



FIRST FLOOR





◀ At the rear, the layout was reworked to accommodate a new open-plan kitchen/dining/family area that would be the heart of everyday living as well as entertaining. “The pool was to be retained so the footprint we had for the open-plan area was modest,” says Chelsea. “The budget was tight too, which is always a challenge. We trimmed wherever we could to bring the overall costs down, but to successfully meet the brief, the budget had to be increased.”

Upstairs is the children’s domain, containing their bedrooms, a bathroom and TV room. This first-floor addition has given the family much-needed breathing space, but it is the kitchen/dining/family area that is arguably the biggest success.

“The owners are very practical people and the existing kitchen design wasn’t at all suited to their lifestyle,” says Chelsea. Easy-care finishes were a must, as was plenty of bench space for food prep and those stopping to snack or chat with the cook. The kitchen joinery morphs into a homework/office area with built-in desk, beneath which each child has a cupboard for stashing school clutter.

There was previously no dining area to speak of, but the reconfigured space now has sufficient room for a 10-seater table as well as stools at the kitchen island, which the sociable family puts to good use.

“It is now two years since the reno was completed and we couldn’t be happier,” says the owner. “We were able to stay in the house and location we loved and now it suits our lifestyle perfectly.”



Interior designer: Chelsea Hing, St Kilda, Victoria; (03) 8506 0417 or chelseahing.com.au. Building designer: Karl Degering & Associates, South Yarra, Victoria; (03) 9824 2655.

‘WE WERE ABLE TO STAY IN THE HOUSE AND LOCATION WE LOVED AND NOW IT SUITS OUR LIFESTYLE PERFECTLY.’

HOMEOWNER

CHILD’S ROOM A pinboard and shelving over the desk provide plenty of display space for awards and mementos. Eames chair, Luke Furniture.

ENSUITE The vanity is made from American oak veneer to link with the timber flooring and kitchen island joinery. Splashback tiles, Artedomus. Tapware, Rogerseller.

EXTERIOR Full-height glass doors at the rear of the house and the glass pool fence work in tandem to make the area feel larger than it is. Philippe Starck Bubu stool/side table, Space. Bluestone pavers, Lush Landscape Creations. Smart buy: Deckchair, \$200, Ici et Là. For Where to Buy, see page 236.



RENOVATION NOTEBOOK

Location Inner-city Melbourne.

Wish list A high-spec finish sympathetic to the home's heritage. Plenty of storage and space for everyone.

Outcome A beautiful family home that is a pleasure to live in.

Splurge Extensive custom-designed joinery. "But it was worth it," says the owner.

Save Artwork. "Reframing and rearranging some of our favourite pieces into groups gave them a new lease of life."

Favourite elements The welcoming view from the front door and the ultra-practical kitchen and laundry.

Lessons learnt Taking the time to choose the right team – builder, building designer and interior designer – was crucial. "Being in such good hands made renovating a pleasurable experience," says the owner.

